

© 2022 RPS Group  
 Notes  
 1. This drawing has been prepared in accordance with the scope of RPS's appointment with its client and is subject to the terms and conditions of that appointment. RPS accepts no liability for any use of this document other than by its client and only for the purposes for which it was prepared and provided.  
 2. If received electronically it is the recipient's responsibility to print to correct scale. Only written dimensions should be used.  
 3. Where applicable Ordnance Survey (c) Crown Copyright 2022. All rights reserved. Licence number 0100031673

### Key

- Order Limits
- Tree with numbered reference. Canopy spread and coloured BS5837:2012 tree quality category as shown below.
- Vegetation group with numbered reference. Canopy extents and coloured BS5837:2012 tree quality category as shown below.
- Hedge with numbered reference. Canopy extents and coloured BS5837:2012 tree quality category as shown below.
- Woodland with numbered reference. Canopy extents and coloured BS5837:2012 tree quality category as shown below.

BS 5837:2012 Tree Quality Categories - Table 1

- Category A - High quality
- Category B - Moderate quality
- Category C - Low quality
- Category U - Unsuitable for retention

Indicative Root Protection Area (RPA). Calculated in accordance with Section 4.6 - BS5837:2012, using the following average diameters:

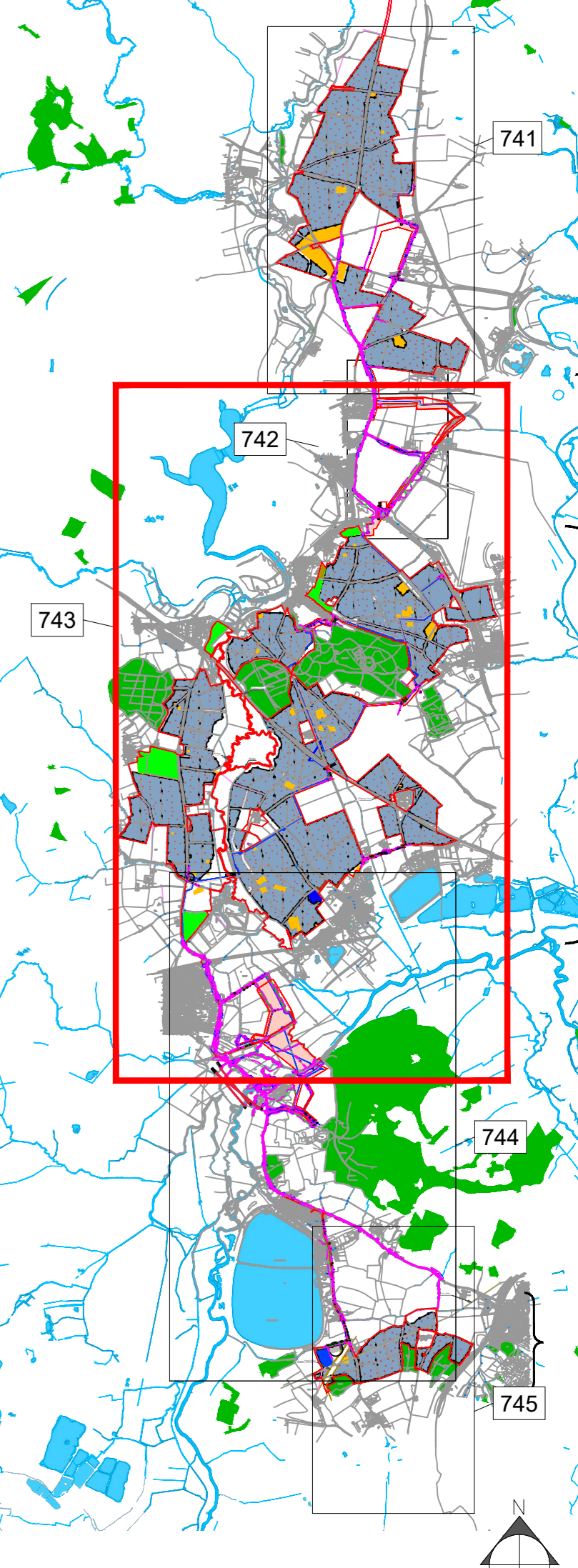
- Small Trees: 250mm
- Medium Trees: 500mm
- Large Trees: 750mm

Some trees were given more specific diameters where diameters were too small/large to fit these groups.

- Designated Ancient Woodland (as per Natural England ancient woodland inventory, via open data publication)
- Ancient tree buffer (15m offset) (as per standing advice produced by Forestry England and Natural England)
- Veteran tree buffer (15 x stem Ø) (as per standing advice produced by Forestry England and Natural England)
- Proposed cable route (subject to detailed design).

NOTES:

- Refer to RPS Tree Survey Report & Schedule for further details.
- Survey based on a visual inspection from the ground and is not intended as a full arboricultural inspection.
- Plan produced in accordance with recommendations set out in BS 5837:2012 - Trees in Relation to design, demolition and construction.
- Due to the legal protection afforded to breeding birds vegetation removal should not take place during the bird nesting period, generally, although not restricted to, March - August inclusive.
- Survey based upon National Tree Map data purchased by RPS in November, 2022.



Scale Bar: 0m, 15m, 30m

D	Alignment of cable route clarified.	DC	DC	15/08/2025
C	Survey extended to cover revised cable route and Sub Stations	SH	DC	30/05/2025
B	Red Line Boundary Change	RC	DC	07/11/2024
A	Red Line Boundary Change	RC	DC	23/10/2023
Rev	Description	By	CB	Date

**MAKING COMPLEX EASY**

Lakesbury House, Hittingbury Road, Chandlers Ford, Hampshire SO53 5SS  
 T: 02380 810 440 E: rpsso@rpsgroup.com

Client: **Photovoltaic Development Partners**

Project: **Botley West Solar Farm**

Title: **Proposed Site Layout Middle Section Section 3 of 5**

Status: Drawn By: RC, PM/Checked by: DC

For Information

Job Ref: 4631, Scale @ A1: Custom, Date Created: July 2022

RPS Drawing / Figure Number: 743, Rev: C

rpsgroup.com